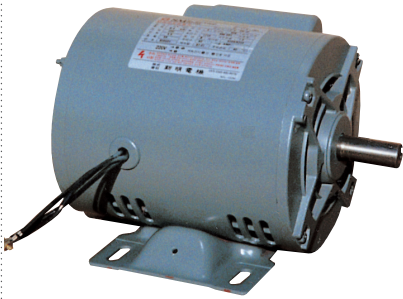


■ 단상 유도 전동기 (표준형) ▶ 4극 (POLES)

Single Phase Induction Motors
Standard Type



◎ 사양 (Specification)

- 전압 (Voltage): 220V(110/220V)
115/230V, 230V
- 주파수 (Frequency) : 60Hz(50Hz)
- 극수 (Poles) : 4P
- 회전수 (R.P.M) : 1800(1500)
- 외피방식 (Type of Enclosure) :
보호형 (Open Drip-Proof)
- 정격 (Rating) : 연속정격 (Continuous)
- 절연계급 (Insulation Class) B, F 중
- 기동방식 (Starting Method) :
분 상 기동형 (Split Phase Starting)
콘덴서 기동형 (Capacitor Starting)
콘덴서 기동운전형 (Capacitor Starting &
Capacitor Run)

FRAME NO	OUT PUT		DIMENSION(mm)															KEY SIZE			BEARING		NET WEIGHT T (kg)	
	KW	FIG	L	S	A	B	C	D	E	H	Q	I	K	O	W	N	U	T	F	G	V	LOAD		UN-LOAD
*71	0.2	I	230	200	112	90	45	14h6	30	71	138	150	7	69	67	134	110	13			25	6202zz	6202zz	7
71	0.25	II	240	210	112	90	45	14h6	30	71	138	150	7	69	85	134	110	13			25	6202zz	6202zz	8
*80	0.4	II	287	247	125	100	50	16j6	40	80	153	165	10	126	88	145	130	13	5	5	30	6203zz	6202zz	10
90	0.4	II	261	221	140	100	56	19j6	40	90	172.3	190	10	84	92	165	130	16	6	6	30	6204zz	6203zz	11
90	0.55	II	276	236	140	125	56	19j6	40	90	173	190	10	139	97	165	155	16	6	6	30	6204zz	6203zz	13
*90L	0.75	II	291	251	140	125	56	19j6	40	90	172.3	190	10	84	97	165	155	16	6	6	30	6204zz	6203zz	16
90	1.1	II	311	271	140	125	56	19j6	40	90	178	190	10	84	100.7	165	155	16	6	6	30	6204zz	6203zz	28
114	1.1	II	314	264	190	114	70	22h6	50	114.3	222.5	224	12	173	122	216.4	165	18	7	7	40	6206zz	6204zz	21
114S	1.5	II	329	279	190	114	70	22h6	50	114.3	222.5	224	12	173	125	216.4	165	18	7	7	40	6206zz	6204zz	32
114M	2.2	III	349	289	190	140	70	28h6	60	114.3	222.5	224	12	173	157	216.4	165	24	7	7	50	6206zz	6204zz	35
#184T		V	359	289	190	140	70	28.5h6	70	114.3	272	224	12	199	109	217	165	25	6.4	6.4	45.2	6206zz	6204zz	36
114L	3.7	IV	359	299	190	140	70	28h6	60	114.3	275	224	12	173	130	216.4	165	24	7	7	50	6206zz	6204zz	38
#184T		V	394	324	190	140	70	28.5h6	70	114.3	272	224	12	199	109	217	165.0	25	6.4	6.4	45.2	6206zz	6204zz	40
#215T	5.5	V	448	362	216	178	90	34.9h6	86	133.3	305	255	11	257	122	243	215	31	7.9	7.9	62	6307zz	6305zz	61
#215T	7.5	V	488	402	216	178	90	34.9h6	86	133.3	305	255	11	257	122	243	215	31	7.9	7.9	62	6307zz	6305zz	70

주) 5.5kW, 7.5kW 주문 사양입니다.

[#] 표시는 NEMA 치수규격임, [*] 표시는 KS 표시품임

FIG I

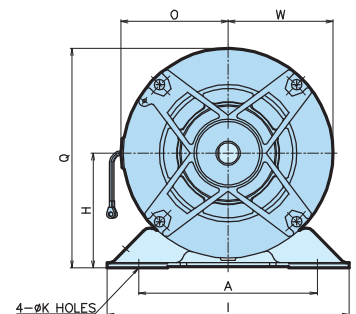
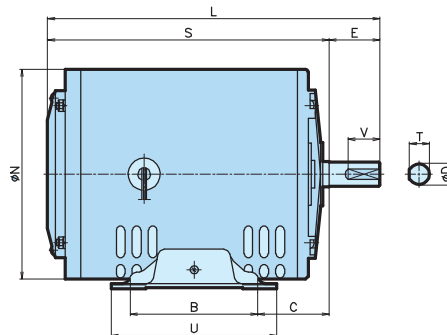


FIG II

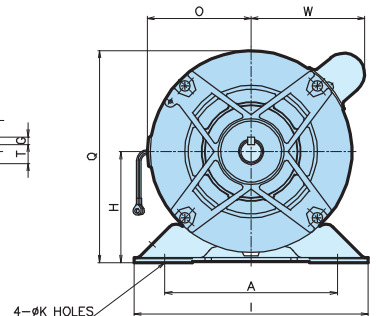
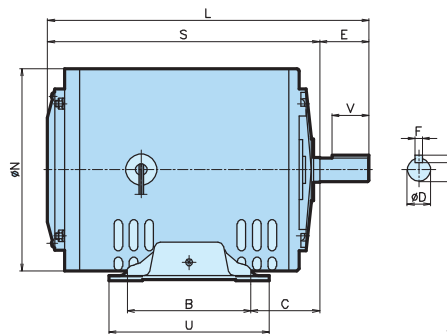
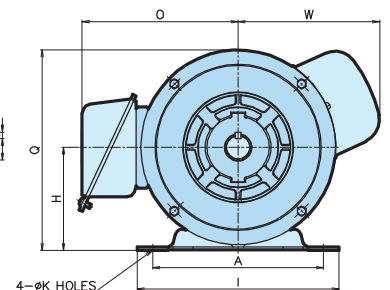
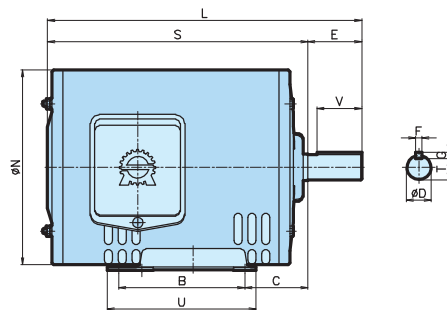


FIG III



□ 외관 및 규격은 제품성능 개선을 위해 예고없이 변경될 수 있습니다.

FIG IV

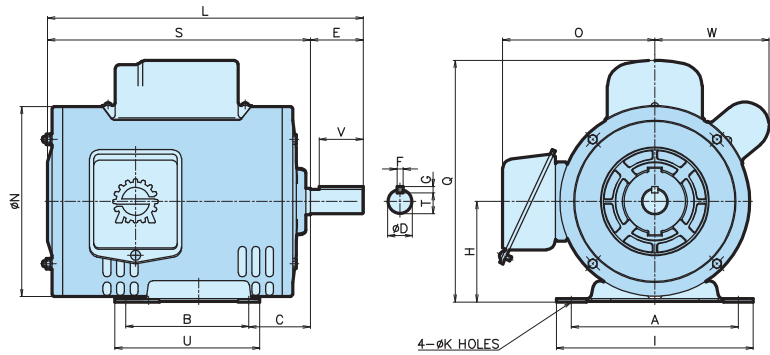
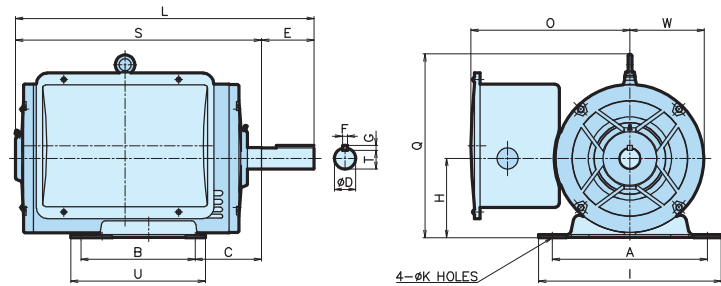
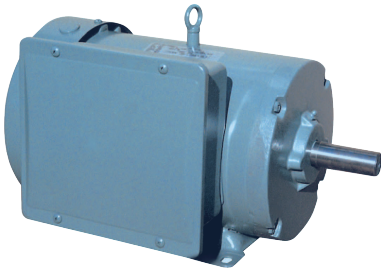


FIG V



■ 단상 유도 전동기 (전폐형)
Single Phase Induction Motors
TEFC Type



▶ 4극 (POLES)

FRAME NO	OUT PUT		DIMENSION(mm)														KEY SIZE			BEARING		NET WEIGHT (kg)		
	KW	FIG	L	S	A	B	C	D	E	H	Q	I	K	O	W	N	U	T	F	G	V		LOAD	UN-LOAD
#184T	2.2	I	429	359	190	140	70	28.5h6	70	114.3	272	224	12	199	121	240	165	25	6.4	6.4	45	6206zz	6305zz	39
#184T	3.7	I	449	379	190	140	70	28.5h6	70	114.3	272	224	12	199	121	240	165	25	6.4	6.4	45	6206zz	6305zz	43
#215T	5.5	I	520	434	216	178	90	34.9h6	86	133.4	305	255	11	257	122	273	215	31	7.9	7.9	62	6307zz	6305zz	61
#215T	7.5	I	550	464	216	178	90	34.9h6	86	133.4	305	255	11	257	122	273	215	31	7.9	7.9	62	6307zz	6305zz	72

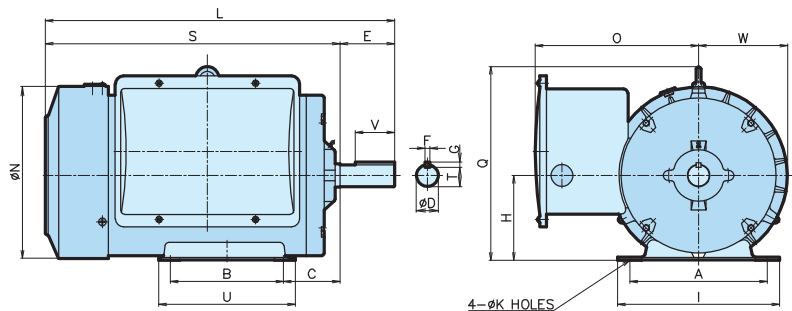
주) 주문사양으로 제작됩니다.

[#] 표 시는 NEMA 치수규격임

◎ 사양 (Specification)

- 전압 (Voltage): 220V(110/220V)
115/230V,230V
- 주파수(Frequency) : 60Hz(50Hz)
- 극수(Poles) : 4P
- 회전수 (R.P.M) : 1800(1500)
- 외피방식(Type of Enclosure) : 전폐형(Totally Enclosure)
- 정격(Rating) : 연속정격(Continuous)
- 절연계급(Insulation Class) B,F 중
- 기동방식(Starting Method) : 분 상 기동형(Split Phase Starting)
콘덴서 기동형(Capacitor Starting)
콘덴서 기동운전형(Capacitor Starting & Capacitor Run)

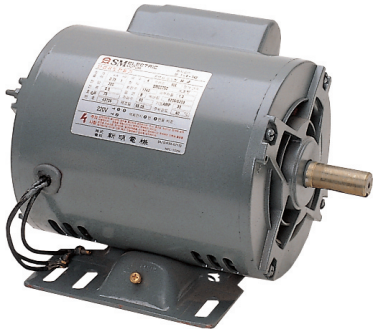
FIG I



□ 외관 및 규격은 제품성능 개선을 위해 예고없이 변경될 수 있습니다.

■ 단상 유도 전동기 (운전형)
Single Phase Induction Motors
Capacitor Run Type

▶ 4극 (POLES)

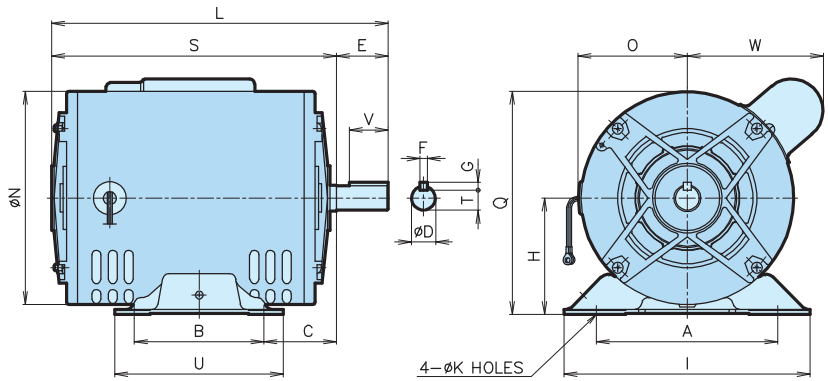


FRAME NO	OUT PUT		DIMENSION(mm)															KEY SIZE			BEARING		NET WEIGHT (kg)	
	KW	FIG	L	S	A	B	C	D	E	H	Q	I	K	O	W	N	U	T	F	G	V	LOAD		UN-LOAD
90S	0.4	I	235	195	140	100	56	19j6	40	90	173	190	10	139	102	165	130	15.5	6	6	30	6204zz	6204zz	11
90L	0.75	I	260	220	140	125	56	19j6	40	90	173	190	10	139	111	165	155	15.5	6	6	30	6204zz	6204zz	16

◎ 사양 (Specification)

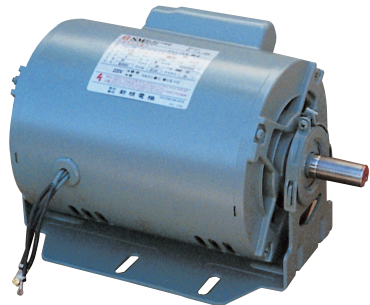
- 전압 (Voltage): 220V(110/220V)
- 주파수 (Frequency) : 60Hz(50Hz)
- 극수 (Poles) : 4P
- 회전수 (R.P.M) : 1800(1500)
- 외피방식 (Type of Enclosure) : 보호형 (Open Drip-Proof)
- 정격 (Rating) : 연속정격 (Continuous)
- 절연계급 (Insulation Class) B, F 중
- 기동방식 (Starting Method) : 분 상 기동형 (Split Phase Starting)
콘덴서 기동형 (Capacitor Starting)
콘덴서 기동운전형 (Capacitor Starting & Capacitor Run)

FIG I



■ 단상 유도 전동기 (방진형)
Single Phase Induction Motors
Cradle Base Type

▶ 4극 (POLES)



FRAME NO	OUT PUT		DIMENSION(mm)															KEY SIZE			BEARING		NET WEIGHT (kg)	
	KW	FIG	L	S	A	B	C	D	E	H	Q	I	K	O	W	N	U	T	F	G	V	LOAD		UN-LOAD
#4B	0.2	I	246	216	107.7	69.85	63.5	14h6	30	76.2	143.2	150	9	69	85	134	204	13	-	-	25	6202zz	6202zz	7
#4B	0.25	I	246	216	107.7	69.85	63.5	14h6	30	76.2	143.2	150	9	69	85	134	204	13	-	-	25	6202zz	6202zz	9
#56	0.4	II	301	261	124	76.2	70	19j6	40	94	176.3	165	10	84	97	165	248	15.5	6	6	30	6204zz	6203zz	12
#56	0.55	II	301	261	124	76.2	70	19j6	40	94	176.3	165	10	84	97	165	248	15.5	6	6	30	6204zz	6203zz	14
#56	0.75	II	301	261	124	76.2	70	19j6	40	94	176.3	165	10	84	97	165	248	15.5	6	6	30	6204zz	6203zz	16

[#] 표시는 NEMA 치수규격임

◎ 사양 (Specification)

- 전압 (Voltage): 220V(110/220V)
- 주파수 (Frequency) : 60Hz(50Hz)
- 극수 (Poles) : 4P
- 회전수 (R.P.M) : 1800(1500)
- 외피방식 (Type of Enclosure) : 보호형 (Open Drip-Proof)
- 정격 (Rating) : 연속정격 (Continuous)
- 절연계급 (Insulation Class) B, F 중
- 기동방식 (Starting Method) : 콘덴서 기동형 (Capacitor Starting)
콘덴서 유도형 (Capacitor Run)

FIG I

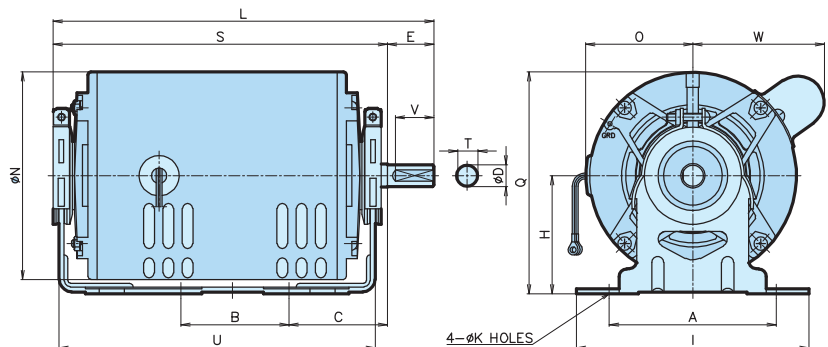
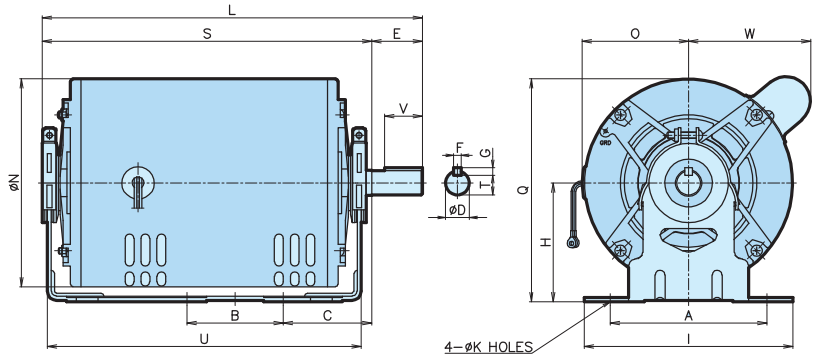


FIG II



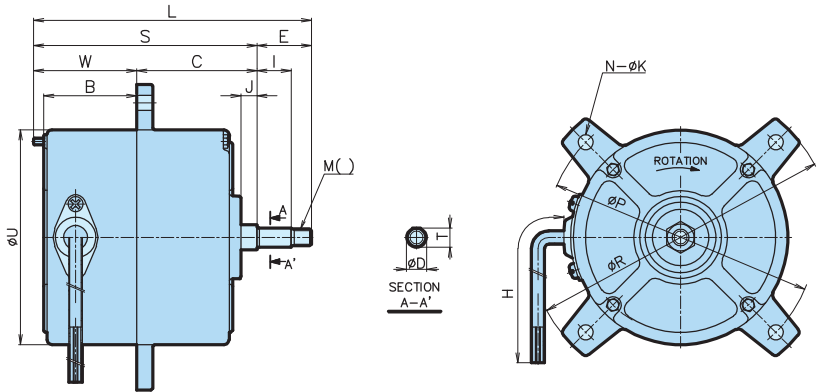
■ 단상 유도 전동기 (농업용)
Single Phase Induction Motors
For Agricultural Dryer Type

▶ 4극 (POLES)

FRAME NO	OUT PUT		DIMENSION(mm)																	KEY SIZE			BEARING		NET WEIGHT (kg)
	KW	FIG	L	S	E	C	W	B	J	I	M	U	D	H	N	K	P	R	T	F	G	V	LOAD	UN-LOAD	
71M	0.25	I	165.4	133	32.4	71.5	61.5	55.5	9.5	20.4	10(좌)	128	12	1100	4	9	160	182	11.5	-	-	-	6202zz	6202zz	5
90L	1.01 1.1	II	311	225	83	109	86	-	7	63	16(좌)	164.6	18	2150	4	10	200	227.2	15	5	5	62	6205zz	6205zz	17
112S	1.35	II	296	234	62	111	123	-	6	40	16(우)	197	22	3000	4	10	238.7	264.7	18	7	7	28	6205zz	6205zz	28



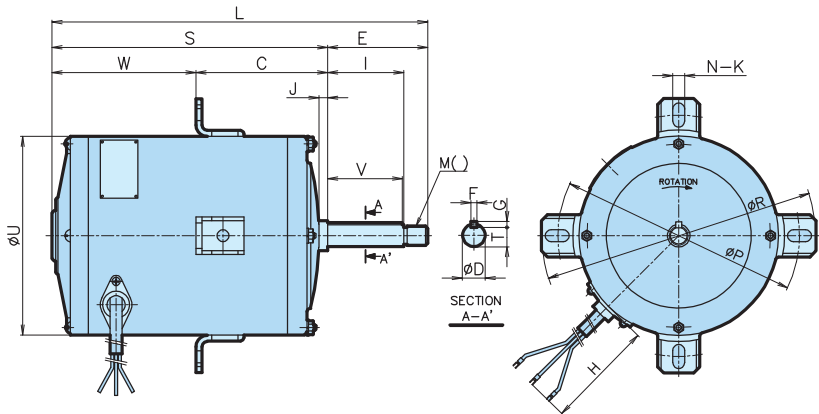
FIG I



◎ 사양 (Specification)

- 전압 (Voltage): 220V(110/220V)
115/230V, 230V
- 주파수 (Frequency) : 60Hz(50Hz)
- 극수 (Poles) : 4P
- 회전수 (R.P.M) : 1800(1500)
- 외피방식 (Type of Enclosure) :
보호형 (Open Drip-proof)
- 정격 (Rating) : 연속정격 (Continuous)
- 절연계급 (Insulation Class) B, F 중
- 기동방식 (Starting Method) :
분상 기동형 (Split Phase Starting)
콘덴서 기동형 (Capacitor Starting)
콘덴서 기동운전형 (Capacitor Starting & Capacitor Run)

FIG II



□ 외관 및 규격은 제품성능 개선을 위해 예고없이 변경될 수 있습니다.